



**BOSCH**

**Register** your  
new device on  
MyBosch now and  
get free benefits:  
**[bosch-home.com/  
welcome](https://bosch-home.com/welcome)**



# Glass blender attachment

**MUZ45MX1**

**[en]**

User manual

Glass blender attachment

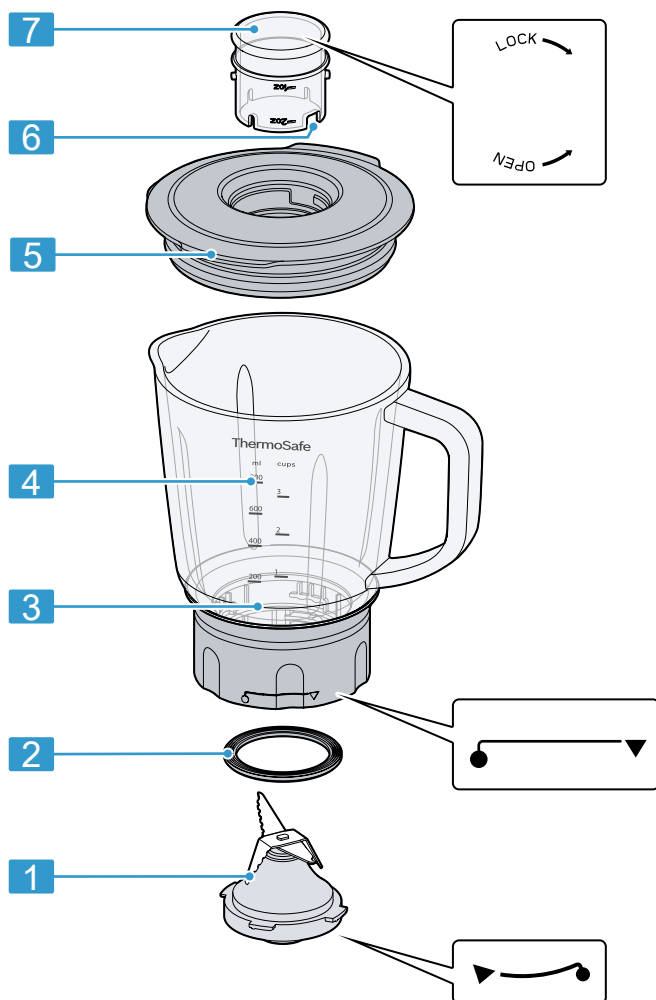


<https://www.bosch-home.co.uk/manual/8001226066>

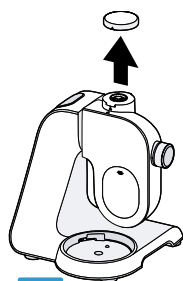


---

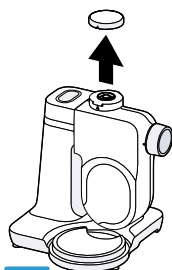
**[en]** Scan the QR code or visit the website to open the Further Notices for Use. You can find additional information about your appliance or accessory here.



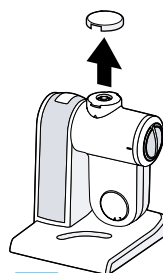
1



A

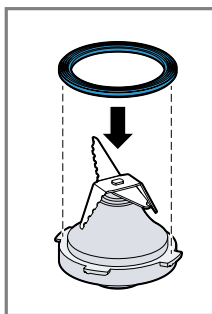


B

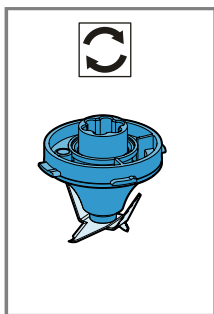


C

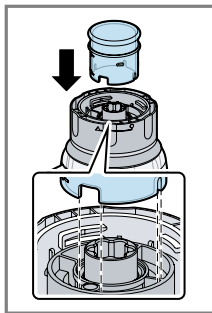
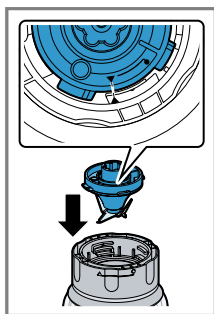
2



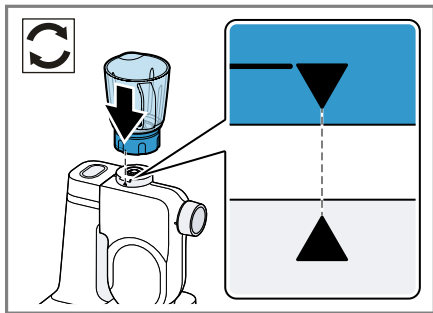
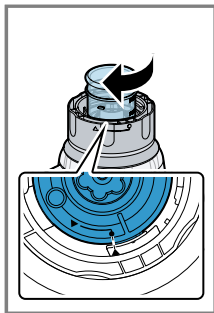
3



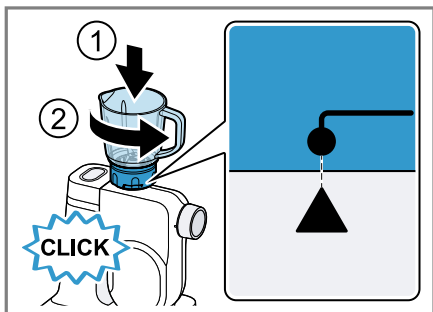
4



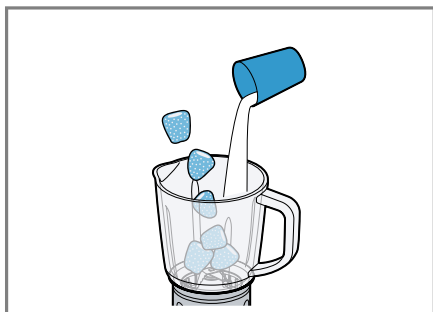
5



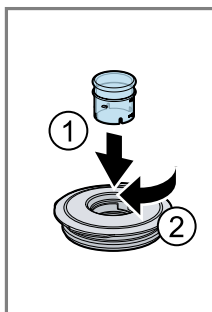
6



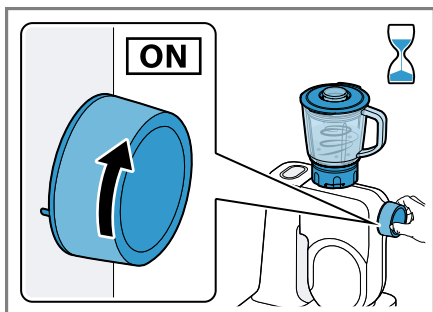
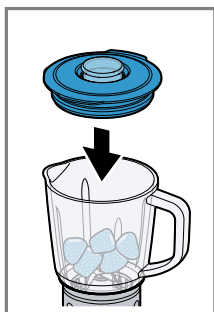
7



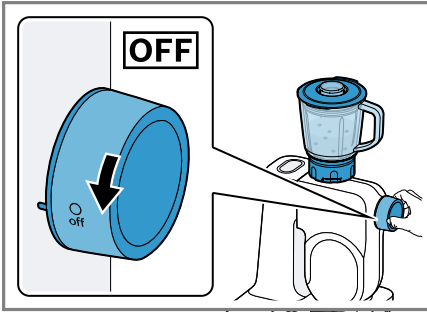
8



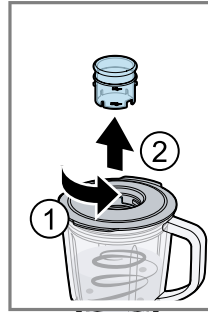
9



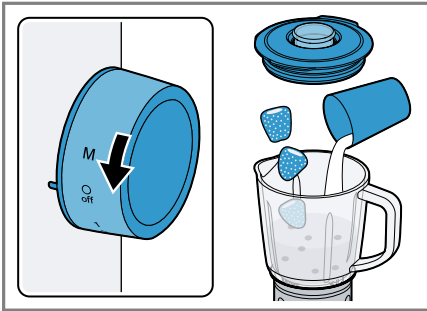
10



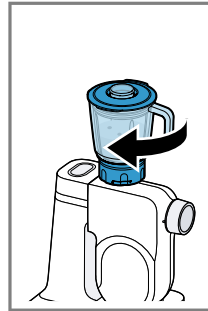
11



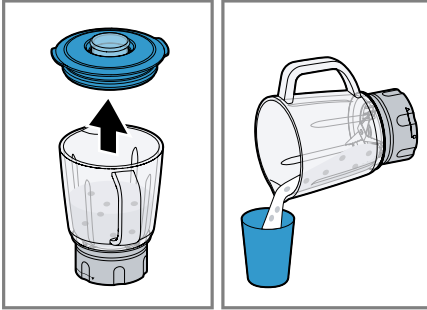
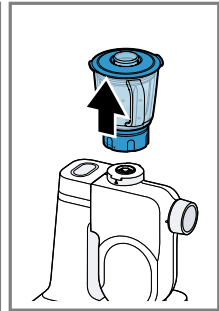
12










13



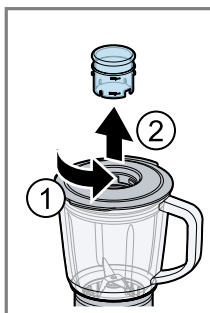
14



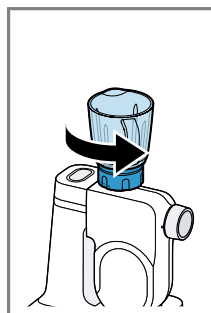
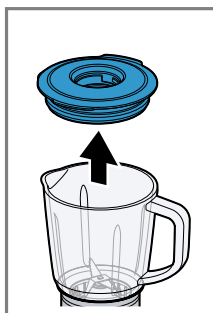
15

				
	✓	✓	✓	✗
	✓	✓	✓	✓
	✓	✓	✓	✓

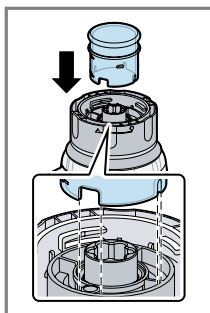
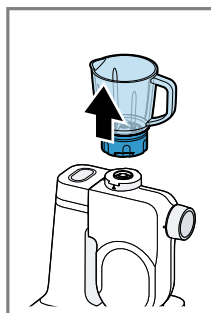
16



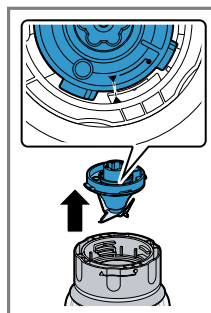
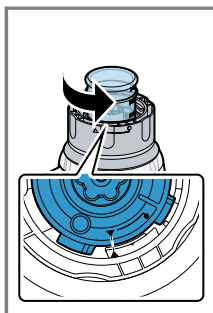
17



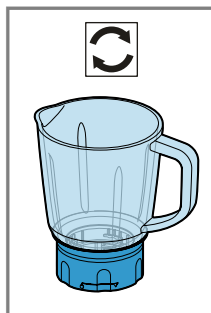
18



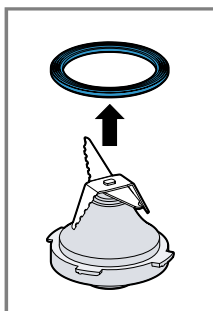
19








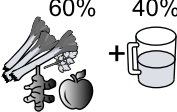


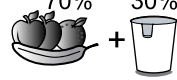


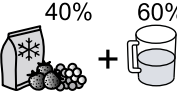





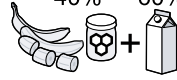













20



21



			 MAX	 1-4	 1-7 / M	 MAX
60% 40% 			600	4	7	90s
70% 30% 			600	4	7	90s
40% 60% 			600	4	7	90s
60% 40% 			800	4	7	60s
40% 60% 			800	4	7	30s
< 70 °C 			600	4	7	60s
60% 40% < 50 °C 			600	4	7	60s
			8x10g	4	M	3-5x2s



## Safety

- Read this instruction manual carefully.
- Observe the instructions for the base unit.

Only use the accessories:

- with a kitchen machine from the same series MUM5, MUMS4, MUMS2, MUM4.
- With genuine parts and accessories.
- For cutting up, chopping, mixing, puréeing and emulsifying liquid or semi-solid food.
- For crushing ice cubes.
- ▶ When cleaning and emptying the blender jug, watch out for the sharp blades.
- ▶ Never touch the edges of the blades with bare hands.
- ▶ Never assemble the accessories on the base unit.
- ▶ Only attach and remove accessories once the drive has stopped and the appliance has been unplugged.
- ▶ Only use the accessories once fully assembled.
- ▶ The accessories should only be used in the intended operating position.
- ▶ Never reach into the fitted accessory.
- ▶ Never operate the accessory without fitting the lid.
- ▶ Add a maximum of 400 ml of hot or frothing food.
- ▶ Process hot food carefully.
- ▶ Do not lean over the appliance.

## Avoiding material damage

- ▶ Do not process food that contains hard components, e.g. bones.
- ▶ Do not insert any objects into the blender jug, e.g. wooden spoons.
- ▶ Before use, check the blender jug for foreign objects.

## Components

You can find an overview of the parts of your appliance here.


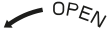
→ Fig. 1

- |   |              |
|---|--------------|
| 1 | Blade insert |
| 2 | Seal         |

3	Blender jug
4	Scale
5	Lid with filling opening
6	Recess for blade insert
7	Measuring cup

## Symbols

Symbol	Description
	Fit the blender jug ▼ and screw on securely ●
	Insert the blade ▲ and tighten it ●

Symbol	Description
	Close the lock for the measuring cup and blade insert
	Open the lock for the measuring cup and blade insert
ThermoSafe	Glass blender jug is made of a special, highly heat-resistant borosilicate glass

## Overview of base units

This accessory can be used with different base units.  
You can prepare your kitchen machine as shown.  
→ Fig. 2

A	Kitchen machine from the MUMS4 or MUM5 series
B	Kitchen machine from the MUMS2 series
C	Food processor from the MUM4 series

## Recipes

You can find a selection of recipes specially developed for your accessories here.

### Overview of recipes

This overview lists the ingredients and processing steps for various recipes.  
→ Fig. 22

- ▶ Do not process food that is hotter than 70 °C in the blender jug.

#### Note

Restrictions on processing:

- The blender cannot be used to make mayonnaise.

## Assembling the accessory

Follow the illustrated instructions.  
→ Fig. 3 - 5

## Processing food

Follow the illustrated instructions.  
→ Fig. 6 - 11

## Adding more ingredients

Follow the illustrated instructions.  
→ Fig. 12 - 13

## Emptying the blender jug

Follow the illustrated instructions.  
→ Fig. 14 - 15

## Cleaning accessories and parts

- ▶ Clean the individual parts as indicated in the table.  
→ Fig. 16

## Disassembling the accessory

Follow the illustrated instructions.  
→ Fig. 17 - 21


- Do not use it to chop ingredients like almonds, onions, parsley and meat.
- Use enough liquid when mixing solid food.
- Mix powdered food with sufficient liquid before blending, or dissolve it entirely in liquid. Examples of powdered food include icing sugar, cocoa powder, roasted soybeans, flour, protein powder.

Recipe	Ingredients	Processing
Banana ice shake	<ul style="list-style-type: none"><li>■ 160 g banana</li><li>■ 50 g vanilla or lemon ice cream</li><li>■ 1 packet vanilla sugar</li><li>■ 250 ml milk</li></ul>	<ul style="list-style-type: none"><li>■ Cut the bananas into pieces and chop up in the blender at maximum setting 7 (4) for 5-10 seconds.</li><li>■ Switch off the blender and add the rest of the ingredients.</li><li>■ Blend the ingredients for 1 minute at maximum setting 7 (4).</li></ul>

Recipe	Ingredients	Processing
Grape smoothie	<ul style="list-style-type: none"> <li>■ 250 g green grapes</li> <li>■ 25 g baby spinach</li> <li>■ 100 g frozen banana pieces</li> <li>■ 200 ml cold green tea (suitable for children)</li> </ul>	<ul style="list-style-type: none"> <li>■ Put a little of the tea in the blender jug.</li> <li>■ Add all the ingredients to the blender jug and pour in the remaining tea.</li> <li>■ Blend the ingredients at maximum setting 7 (4) until the smoothie is ready.</li> </ul>

## Troubleshooting

You can rectify minor faults on your appliance yourself. Read the troubleshooting information before contacting our after-sales service. This will avoid unnecessary costs.

Fault	Cause and troubleshooting
Appliance has a humming sound.	<p>The blade is blocked or stiff.</p> <ul style="list-style-type: none"> <li>▶ Set the rotary switch to <b>○ off</b>.</li> <li>▶ Remove the blockage.</li> </ul>
Liquid is leaking from the blade insert.	<p>Seal between the blender jug and the blade insert is missing.</p> <ol style="list-style-type: none"> <li>1. Place the seal on the blade insert.</li> <li>2. With the aid of the measuring cup, turn the blade insert in the <b>LOCK</b>  direction.</li> </ol> <p>✓ The <b>●</b> and <b>▲</b> markings match up.</p>



## Thank you for buying a Bosch Home Appliance!

Register your new device on MyBosch now and profit directly from:

- **Expert tips & tricks for your appliance**
- **Warranty extension options**
- **Discounts for accessories & spare-parts**
- **Digital manual and all appliance data at hand**
- **Easy access to Bosch Home Appliances Service**

Free and easy registration – also on mobile phones:

**[www.bosch-home.com/welcome](http://www.bosch-home.com/welcome)**



## Looking for help? You'll find it here.

Expert advice for your Bosch home appliances, help with problems or a repair from Bosch experts.

Find out everything about the many ways Bosch can support you:

**[www.bosch-home.com/service](http://www.bosch-home.com/service)**

Contact data of all countries are listed in the attached service directory.

**Robert Bosch Hausgeräte GmbH**

Carl-Wery-Straße 34

81739 München

GERMANY

[www.bosch-home.com](http://www.bosch-home.com)

Valid within Great Britain:

Imported to Great Britain by

BSH Home Appliances Ltd.

Grand Union House

Old Wolverton Road

Wolverton, Milton Keynes

MK12 5PT

United Kingdom



**8001225236** (010510)

de, en, fr, it, nl, da, no, sv, fi, es, pt, el, tr, pl, uk, ru, ar