



BOSCH

Register your
new device on
MyBosch now and
get free benefits:
**[bosch-home.com/
welcome](https://bosch-home.com/welcome)**



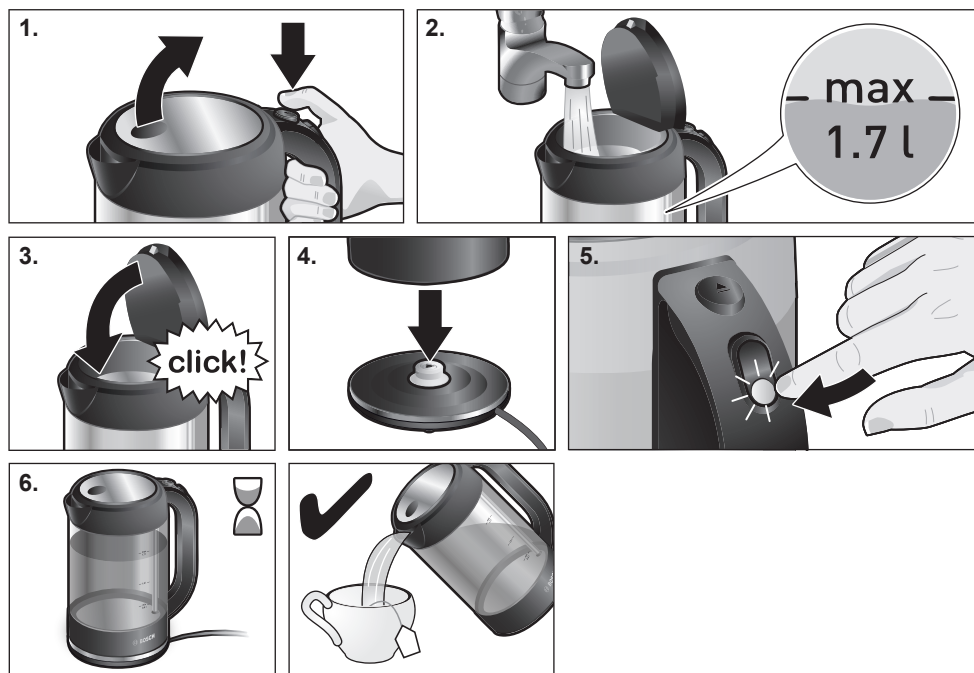
Cordless electric kettle

TWK70B..

[en]

Instruction manual

Cordless electric kettle



Safety instructions

Please read and follow the operating instructions carefully and keep them for later reference. Enclose these instructions when you give this appliance to someone else. This appliance is intended for domestic use only.

Danger of electric shock!

Only use the appliance indoors at room temperature and up to 2000 m above sea level. The appliance may only be connected to a power supply with alternating current via a correctly installed socket with earthing. Ensure that the protective conductor system of the domestic supply has been correctly installed.

Connect and operate the appliance only according to the type plate specifications. To avoid potential hazards, repairs such as replacing a damaged cable must only be carried out by our customer service personnel.

This appliance can be used by children aged from 8 years and above and by persons with reduced physical, sensory or mental capabilities or lack of experience and knowledge if they have been given supervision or instruction concerning use of the appliance in a safe way and if they understand the hazards involved. Keep children under 8 years of age away from the appliance and connecting cable and do not allow them to use the appliance. Children shall not play with the appliance. Cleaning and user maintenance shall not be made by children unless they are older than 8 years and supervised.

Avoid spillage on the connector. Never immerse the appliance, base or mains cable in water.

Use the kettle only with the included base.

Use only if power cord and appliance show no signs of damage. Should a fault occur, pull the plug or disconnect from the mains immediately.

⚠ Risk of fire!

Do not place the base or kettle on or near hot surfaces, e.g. hobs. Avoid spatters of grease as the plastic may be damaged.

⚠ Risk of scalding!

The appliance heats up during use. Make sure you only pick it up by the handle and do not open the lid until the appliance has cooled down. Only use the appliance when the lid is engaged.

If the appliance is filled above the “max” marking, there could be a risk from splashes of boiling water.

⚠ Risk of burns!

After the use the heating element surfaces and warming plate can be subjected to residual heat.



WARNING: Do not use this appliance near bathtubs, showers, basins or other vessels containing water.

⚠ Risk of suffocation!

Do not allow children to play with packaging material.

⚠ Risk of injury!

A misuse of the appliance can potentially lead to injury.

Congratulations on the purchase of your new Bosch appliance. You can find further information about our products on our website.

Parts and operating controls

- 1 Kettle (with water level indicator)
- 2 Lid with lock
- 3 Lid release button
- 4 Switch ① ON/OFF
- 5 Operating light
- 6 Limescale filter (removable)
- 7 Base
- 8 Cable tidy

Important: Use the kettle only with its included base.

- **Only fill the kettle with water.** Milk and instant beverages will burn and damage the appliance. Never operate the kettle without water and do not overfill it; observe the **min** and **max** markings. If the kettle is too full, the water will boil over!

Before using for the first time

- Remove any stickers or film.
- Unroll the right amount of cable from the cable tidy and plug it in.
- Fill the kettle with water. Bring the water to a boil and discard it. Repeat the procedure. This will make sure that the kettle is clean for normal use.
- When the water comes to a boil for the first time, add a tablespoon of white vinegar.

Boiling water

- Fill the kettle with fresh water through the open lid (press lid release button).
- Read the quantity on the water level indicator. Do not fill with less than 0.5 litres or more than 1.7 litres of water!
- Close the lid until it locks and place the kettle on the base.
- Press down the ① switch; the operating light flash up. The water is heated.
- The kettle switches off automatically once the water has boiled.

You can turn off the kettle at any time by pressing the ① switch again.

Warning: If you remove the kettle from the base and replace it before the heating process is over, the kettle will not continue to heat the water.

N.B.: Only operate the kettle with the lid closed and the limescale filter inserted, otherwise the kettle will not switch off. For physical reasons, the base may collect some condensation water. This is normal; it does not mean that the kettle leaks. After boiling, let the kettle cool down for 5 minutes before refilling it with water. Do not turn on the appliance if the kettle is empty, otherwise the overheat control will engage and the appliance will switch itself off automatically.

Cleaning and maintenance

Danger of electric shock!

Never immerse the device in water or place it in the dishwasher!

Do not steam-clean the appliance.

- Before cleaning, unplug the appliance from the power outlet.
- Clean the outside of the kettle and base with a damp cloth. Do not use strong or abrasive cleaning agents.
- Remove the limescale filter, soak it in a little vinegar, then rinse clean with clear water.
- Rinse the kettle and the limescale filter with clear water.

Descaling

Regular descaling

- makes your kettle last longer;
- ensures proper function;
- avoids risk of injury, e.g. uncontrolled pouring if filter is covered with limescale;
- saves energy.

Descale the kettle with vinegar or a commercial descaling agent.

- Fill the kettle up to the **max** mark with water without vinegar or descaling agent and bring to the boil.
- Then add a small amount of white vinegar to the hot water and let the kettle stand for several hours. You can also use a descaling agent according to the manufacturer's instructions (observe safety instructions).
- Then rinse the kettle and limescale filter with clean water.

Tip: If you use the kettle daily, descale more frequently.

Troubleshooting

The appliance does not heat and the operating light does not flash on.

- The overheat control has tripped.
- Let the kettle cool down for some time so that the appliance can be switched on again.

The unit turns off before the water comes to a boil.

- The kettle contains too much scale.
- Descale the kettle as per the instructions.

Technical data

Electrical connection	220-240 V~ 50/60 Hz
Output	2000-2400 W
Appliance height	265 mm
Appliance width	210 mm
Appliance depth	140 mm
Water capacity	1.70 L

Disposal



Dispose of packaging in an environmentally-friendly manner. This appliance is labelled in accordance with European Directive 2012/19/EU concerning used electrical and electronic appliances (waste electrical and electronic equipment – WEEE). The guideline determines the framework for the return and recycling of used appliances as applicable throughout the EU. Please ask your specialist retailer about current disposal facilities.

Guarantee

The guarantee conditions for this appliance are as defined by our representative in the country in which it is sold. Details regarding these conditions can be obtained from the dealer from whom the appliance was purchased. The bill of sale or receipt must be produced when making any claim under the terms of this guarantee.

Changes reserved.



Thank you for buying a Bosch Home Appliance!

Register your new device on MyBosch now and profit directly from:

- **Expert tips & tricks for your appliance**
- **Warranty extension options**
- **Discounts for accessories & spare-parts**
- **Digital manual and all appliance data at hand**
- **Easy access to Bosch Home Appliances Service**

Free and easy registration – also on mobile phones:

www.bosch-home.com/welcome



Looking for help? You 'll find it here.

Expert advice for your Bosch home appliances, need help with problems or a repair from Bosch experts.

Find out everything about the many ways Bosch can support you:

www.bosch-home.com/service

Contact data of all countries are listed in the attached service directory.

Robert Bosch Hausgeräte GmbH

Carl-Wery-Straße 34

81739 München

GERMANY

www.bosch-home.com



9001377031

(980326)