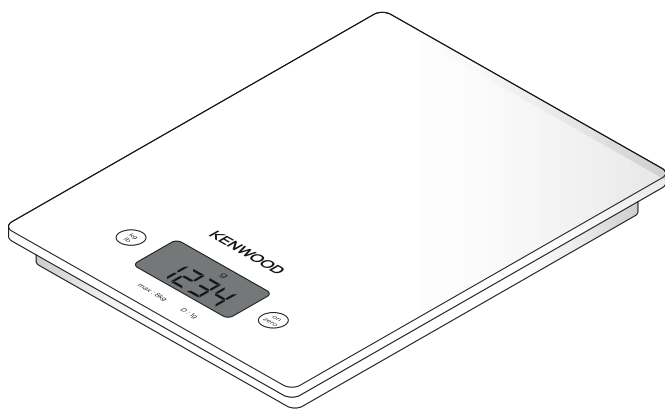


KENWOOD

WEP60

instructions



English

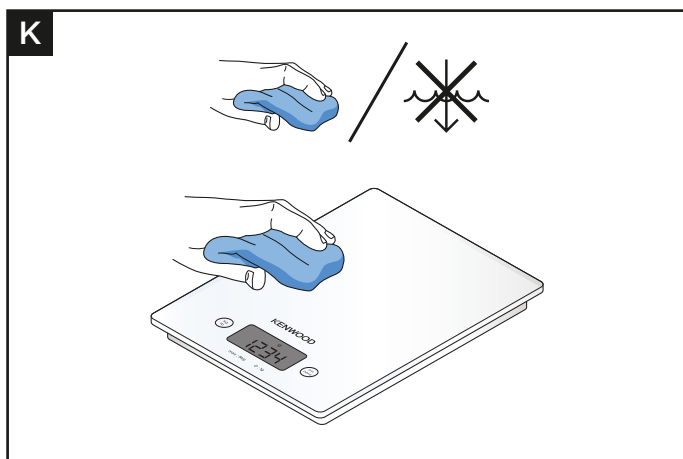
● Safety	2-3
● Care and Cleaning	3
● Part List	4
● To Use Your Scale	5-7
○ Battery Installation	5
○ To Weigh	6-7
● To Switch off the Scales	7
● Service and Customer Care	8

Safety

- Read these instructions carefully and retain for future reference.
- Remove all packaging and any labels.
- Use 2 x AAA batteries (supplied in pack).
- To install the batteries, open and remove the battery compartment cover. Fit the batteries ensuring they are fitted in the correct +/- orientation. Replace and close the battery compartment cover.
- **Ensure** the batteries are fitted in the correct +/- orientation.
- Non-rechargeable batteries are not to be recharged.
- **Do not** mix different types of batteries or new and used batteries.
- **Do not** use modified or damaged batteries.
- When replacing batteries, use only Zinc/Alkaline Batteries. Do not use Lithium batteries.
- **WARNING:** Keep new and used batteries out of the reach of children. If you think a battery might have been swallowed or placed inside any part of the body, it can lead to chemical burns, perforation of soft tissue, and death. Severe burns can occur within 2 hours of ingestion. Seek medical attention immediately.
- **WARNING:** Used and leaking batteries are to be removed from the appliance and disposed of immediately and safely in accordance with the local authority's disposal policy.
- If the scale is to be stored unused for a long period of time, the batteries should be removed.
- The battery supply terminals are not to be short-circuited.
- Children from 8 years and above can use, clean and perform user maintenance on this appliance in accordance with the User Instructions provided they are supervised by a person responsible for their safety and have been given instruction concerning the use of the appliance and are aware of the hazards.
- Persons with reduced physical, sensory or mental capabilities or lack of knowledge using this appliance must have been given supervision or instruction on its safe use and are aware of the hazards.
- Children must be supervised to ensure that they do not play with the appliance and it is out of reach of children less than 8 years.
- **Always** place the scale on a dry and flat surface prior to weighing.
- **Do not** subject the scale to excessive force.

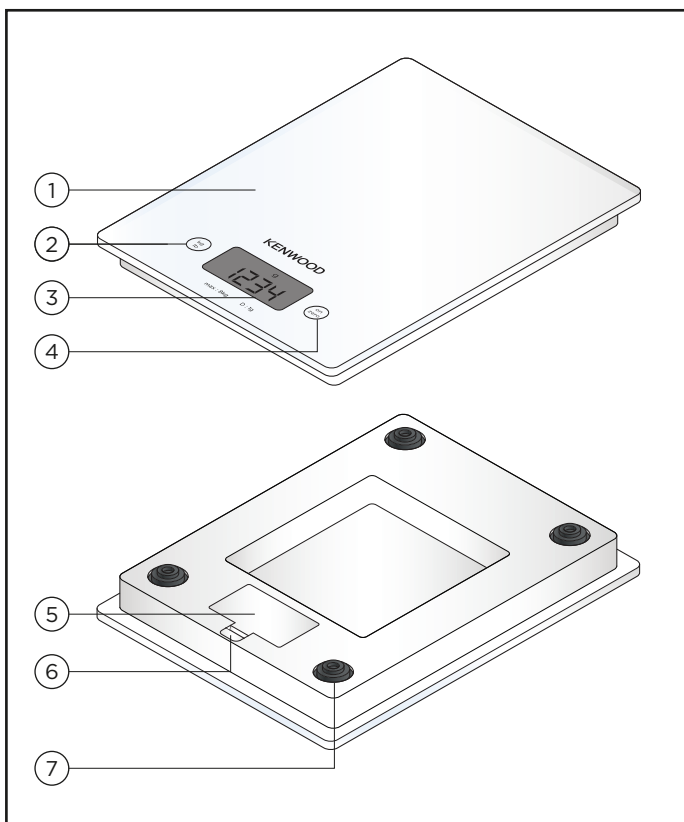
- **Do not** overload the scale by exceeding the maximum weighing capacity of 8 kg as this may damage the weighing sensor.
- **Do not** stand the scale near an oven or other direct source of heat.
- **Do not** place hot food or hot containers such as saucepans onto the weighing platform.
- **Important:** The scale is for domestic use only.

Care and Cleaning

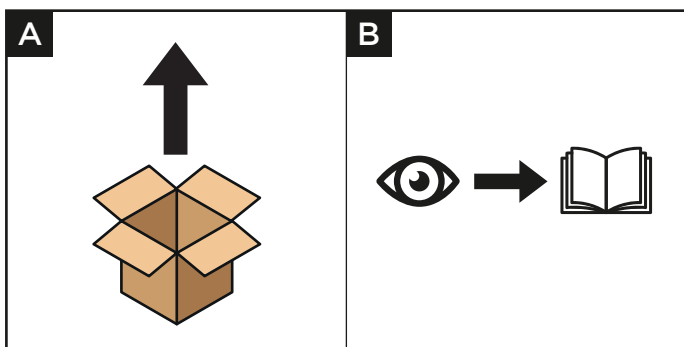


- **Do not** immerse in water. Scale not suitable for use in the dishwasher.
- Wipe with a damp cloth, and dry thoroughly.
- **Do not** use abrasive or chemical agents to clean.

Parts List

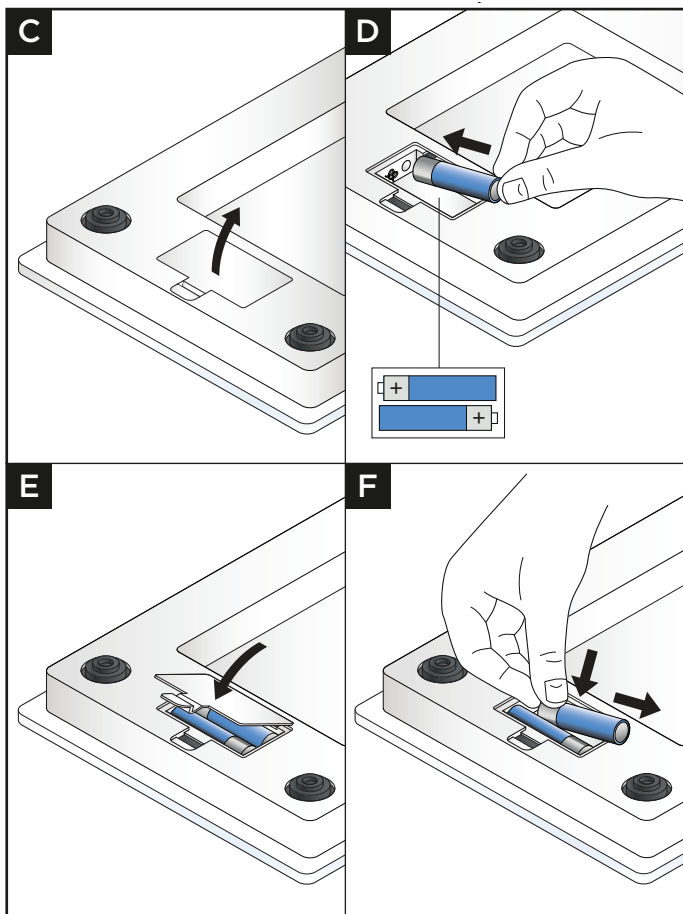


- | | |
|-----------------------|-----------------------------------|
| ① Weighing Platform | ⑤ Battery compartment |
| ② Unit Touch Pad | ⑥ Clip for removing battery cover |
| ③ Display | ⑦ Scale Feet |
| ④ 'On/Zero' Touch Pad | |



To Use Your Scale - Battery Installation

Usage Diagrams and Usage Instructions



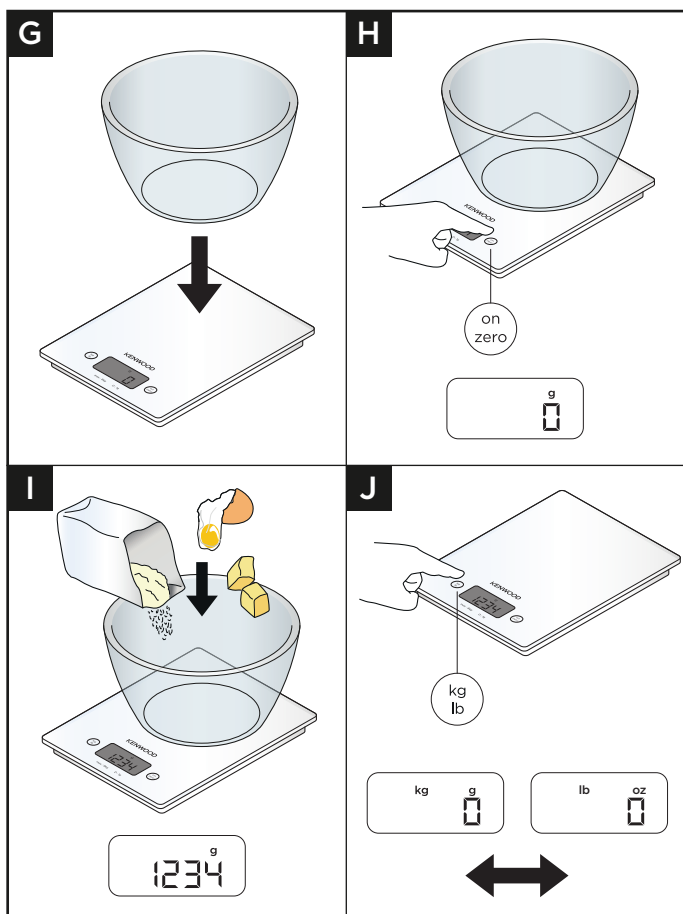
Important

- During use, if the battery symbol 'Lo' appears in the display, it means that battery power is low and the batteries should be replaced (see Service).

- 1 Unclip the battery cover on the underside of the scale by pushing the clip inwards and then lifting off.
- 2 Fit 2 x AAA batteries ensuring they are fitted in the correct +/- orientation. Replace and close the battery compartment cover.

To Use Your Scale - To Weigh

Usage Diagrams and Usage Instructions



Important

- Always place the scale on a dry and flat surface prior to weighing.
- The scale will read 'Err' if it is trying to weigh above its capacity of 8 kg/17lb 9oz.
- Do not overload the scale by exceeding the maximum weighing capacity of 8 kg/17lb 9oz as this may damage the weighing sensor.
- Always ensure the weighing platform is thoroughly clean before placing items directly on its surface.
- When weighing do not place items on the edge of the weighing platform, always place them in the centre.
- Never cut food on the weighing platform as sharp implements such as knives will damage the surface.

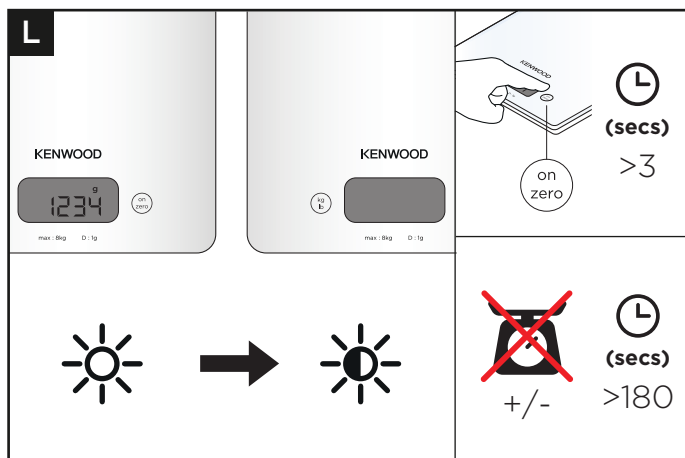
- Do not allow the scale to come into contact with strongly flavoured/coloured food or acids such as the zest from citrus fruits which could damage the surface of the scale.
- Do not expose the scale to any high electro magnetic fields such as a cordless portable phone, computer etc as this will interfere with the functioning and accuracy of the scale.
- Do not use excessive force when pressing the touch pads and never use a sharp object to operate them.

- 1 Place a suitable container onto the scales (if applicable).
- 2 Press the 'on/zero' touch pad to switch on.
- 3 Place ingredients into the container or item to be weighed onto the scales. The weight will appear on the display.

Note: To change the unit displayed press the unit touch pad to change between g and lb's oz.

To weigh additional ingredients into the same container, zero the scales before adding the next ingredient.

To Switch Off the Scales



Manual Switch Off

- To conserve the battery power, switch off the scale when not in use.
- To do this, press and hold the 'on/zero' touch pad until the display disappears.

Auto switch off:

- Automatic switch off will occur if the scale shows the same weight reading for 3 minutes.

- This appliance conforms to EC Regulation 1935/2004 on materials and articles intended to come into contact with food.

Service and Customer Care

- If you experience any problems with the operation of your appliance, before requesting assistance visit www.kenwoodworld.com.
- Please note that your product is covered by a warranty, which complies with all legal provisions concerning any existing warranty and consumer rights in the country where the product was purchased.
- If your Kenwood product malfunctions or you find any defects, please send it or bring it to an authorised KENWOOD Service Centre. To find up to date details of your nearest authorised KENWOOD Service centre visit www.kenwoodworld.com or the website specific to your Country.
- Made in China.



IMPORTANT INFORMATION FOR CORRECT DISPOSAL OF THE PRODUCT IN ACCORDANCE WITH THE EUROPEAN DIRECTIVE ON WASTE ELECTRICAL AND ELECTRONIC EQUIPMENT (WEEE)

At the end of its working life, the product must not be disposed of as urban waste.

It must be taken to a special local authority differentiated waste collection centre or to a dealer providing this service.

Kenwood Ltd

New Lane
Havant
Hampshire
PO9 2NH

kenwoodworld.com



© Copyright 2024 Kenwood Limited. All rights reserved

5721300002/1